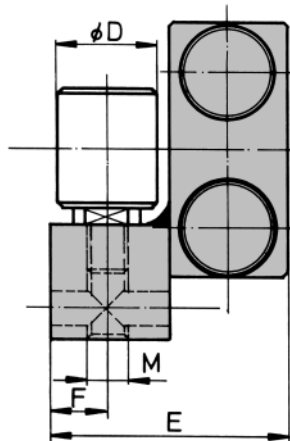
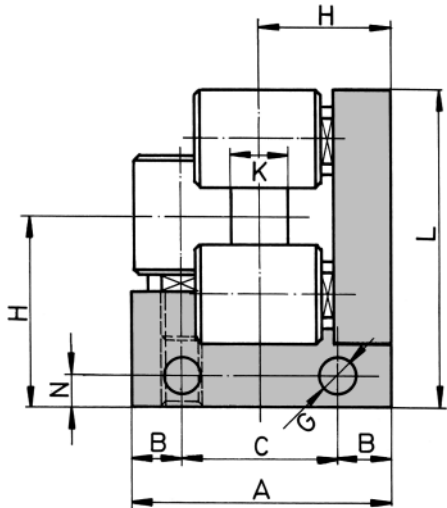


Typ A



Typ B

**RKO**

Ø -2,0 1,0-4,0 2,0-8,0

TYPE	RKO 2	RKO 4	RKO 8
A	48	68	76
B	8/14	14	13
C	26	40	50
D	18	25	30
E	40	60	70
F	10	15	17,5
G	6,6	8,5	8,5
H	27/37	34/49	38/58
K	8	15	20
L	51/61	68/83	76/96
M	M 8	M 10	M 12
N	6	7	10
kg	0,4	1,1	1,8